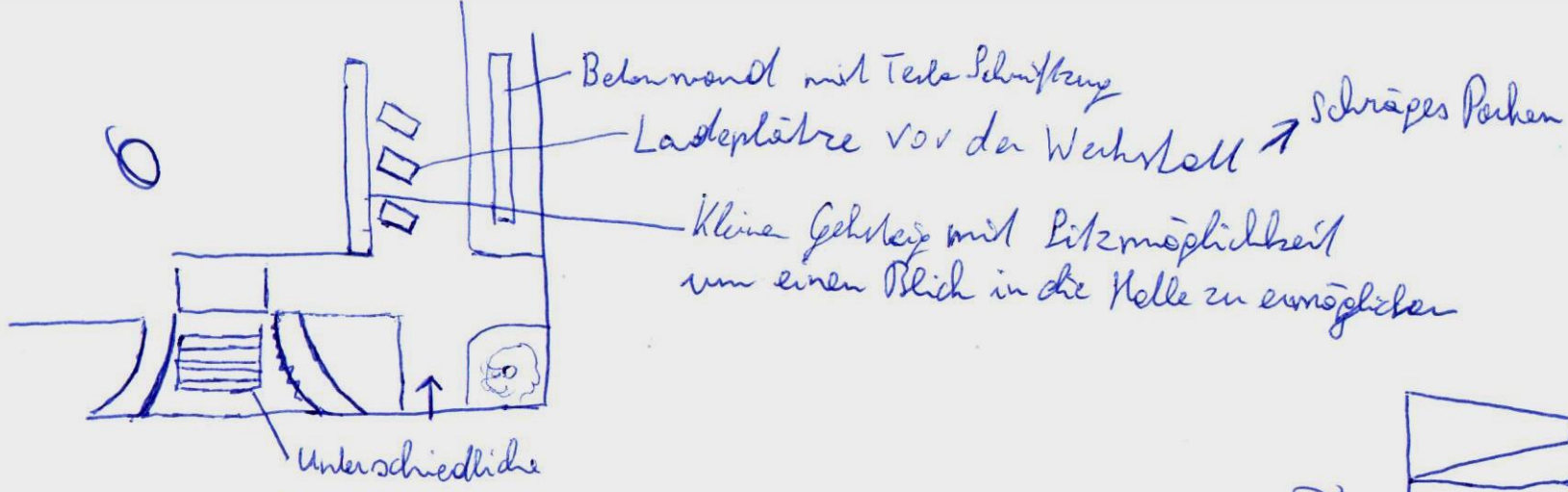


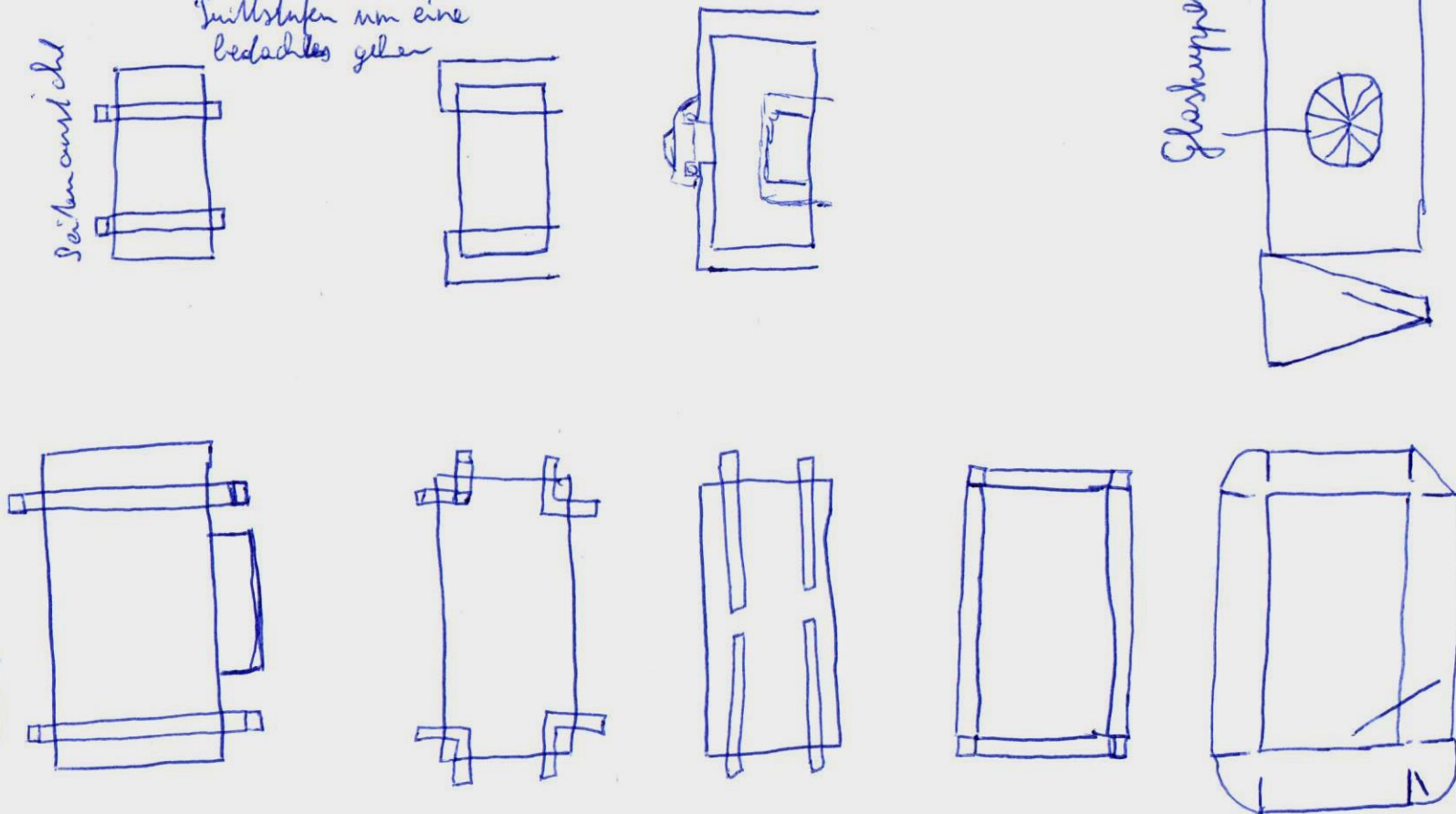
14.10.2015
Draufsicht



- Fahr simuliert
- Auto an Dach

Seitenansicht

Unterschiedliche
Türstufen um eine
bedecktes gehen



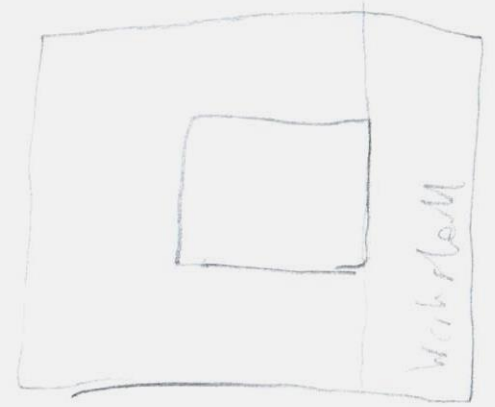
14.10.2015

0G.

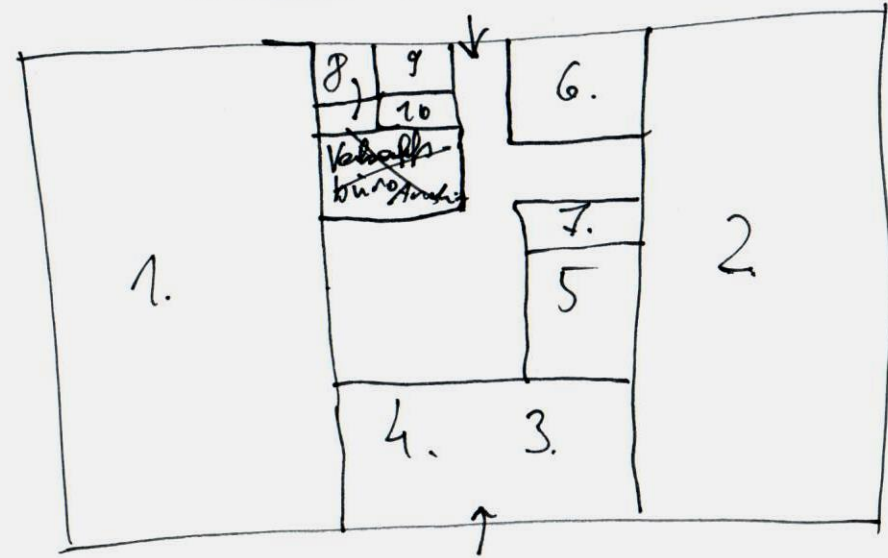
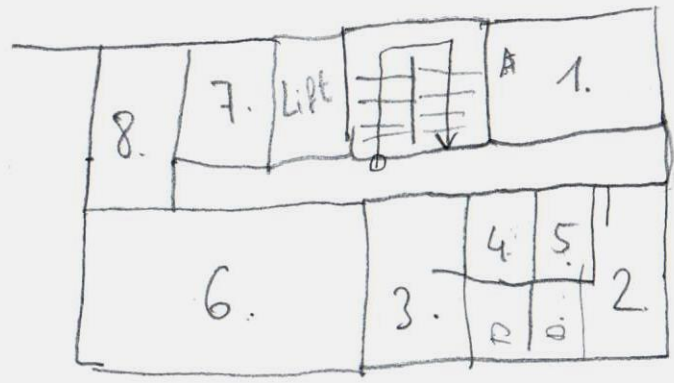
1. Aufenthaltsraum
2. Garderobe Hr.
3. — + — Da
4. WC Da
- 5 WC Hr.
6. Besprechungsraum
7. Chefbüro
8. Personalbüro

E.G.

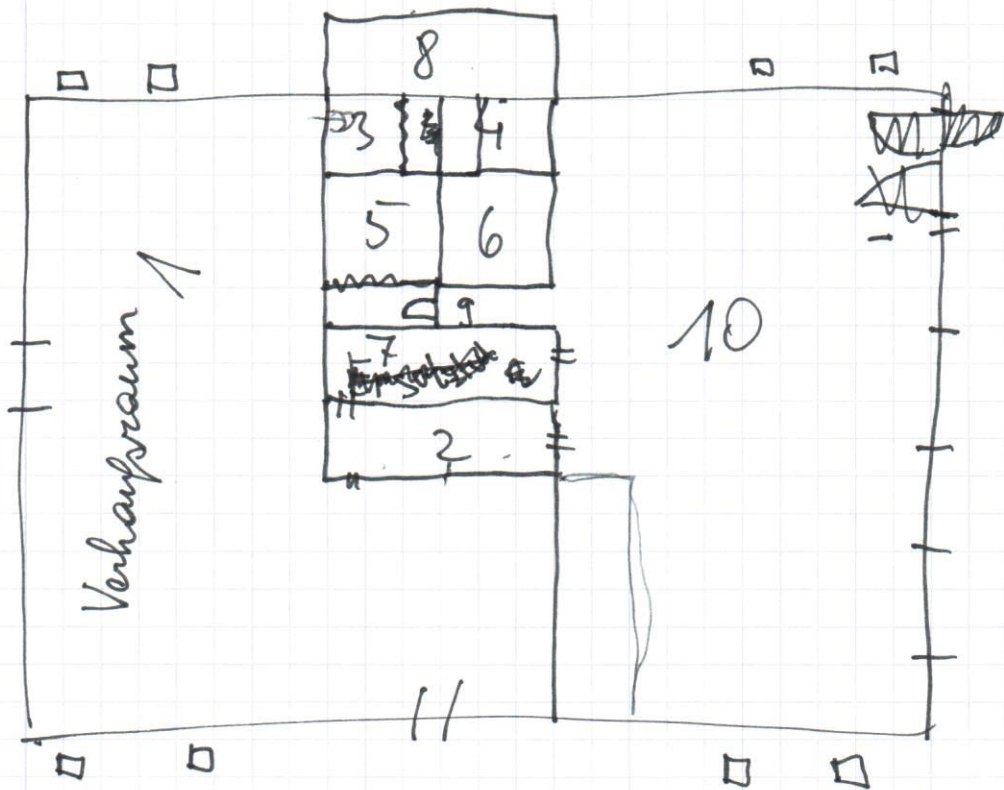
1. Verkaufsräum mit Wänderaum
2. Werkstat
3. Erdlampe
4. Reparaturannahme
5. Ersatzteillager
6. Lift und Treppe
7. Betriebsbüro
8. WC Kunde
- 9/10 WC Mitarbeiter } je 1 WC
- 11.



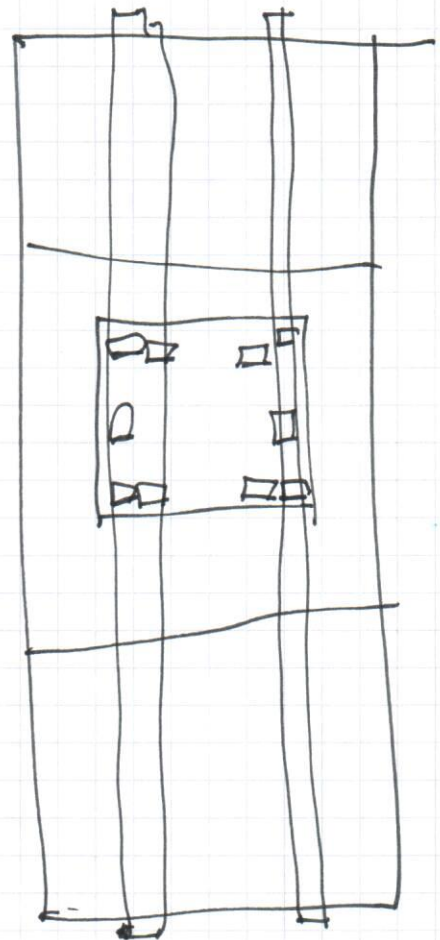
WU →



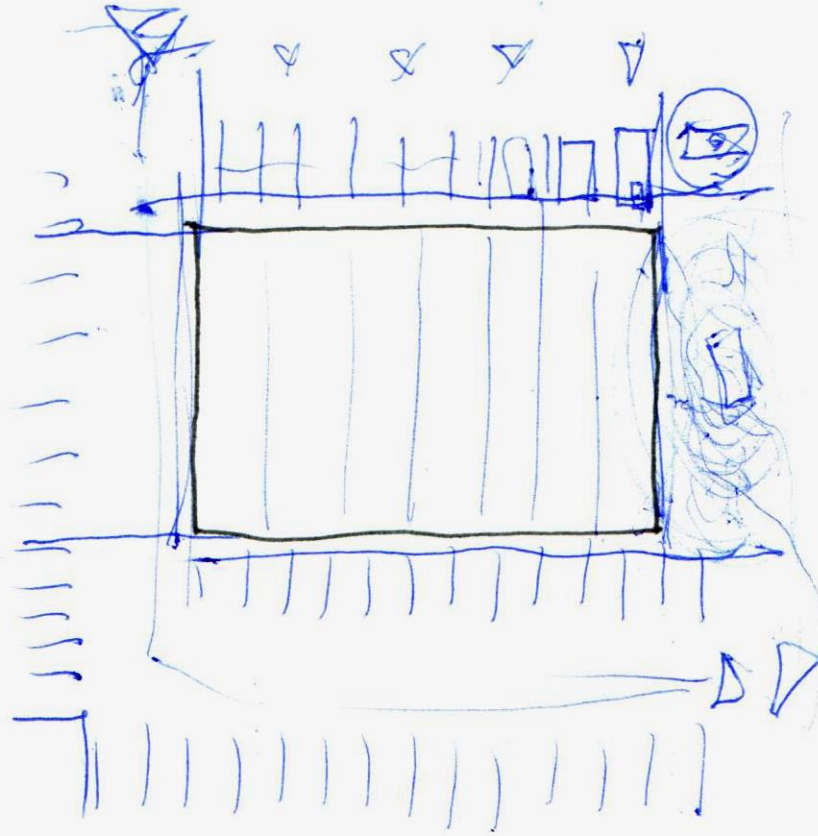
14.10.2015



- 1, Verkaufsraum
- 2, Ersatzteillager mit Verkauf
- 3, WC Kunde
- 4, WC Personal
- 5, Hor. Gerderobe mit Dürthe
- 6 Da. — " — " —
- 7, Aufenthaltsraum mit Belichtung
- 8, Waschrbr.
- 9, Flur
- 10, Werkstall/Rollbove
- 11, Reifeneinlagerung
- 12, Annahmestelle/Kostenvorausschlag

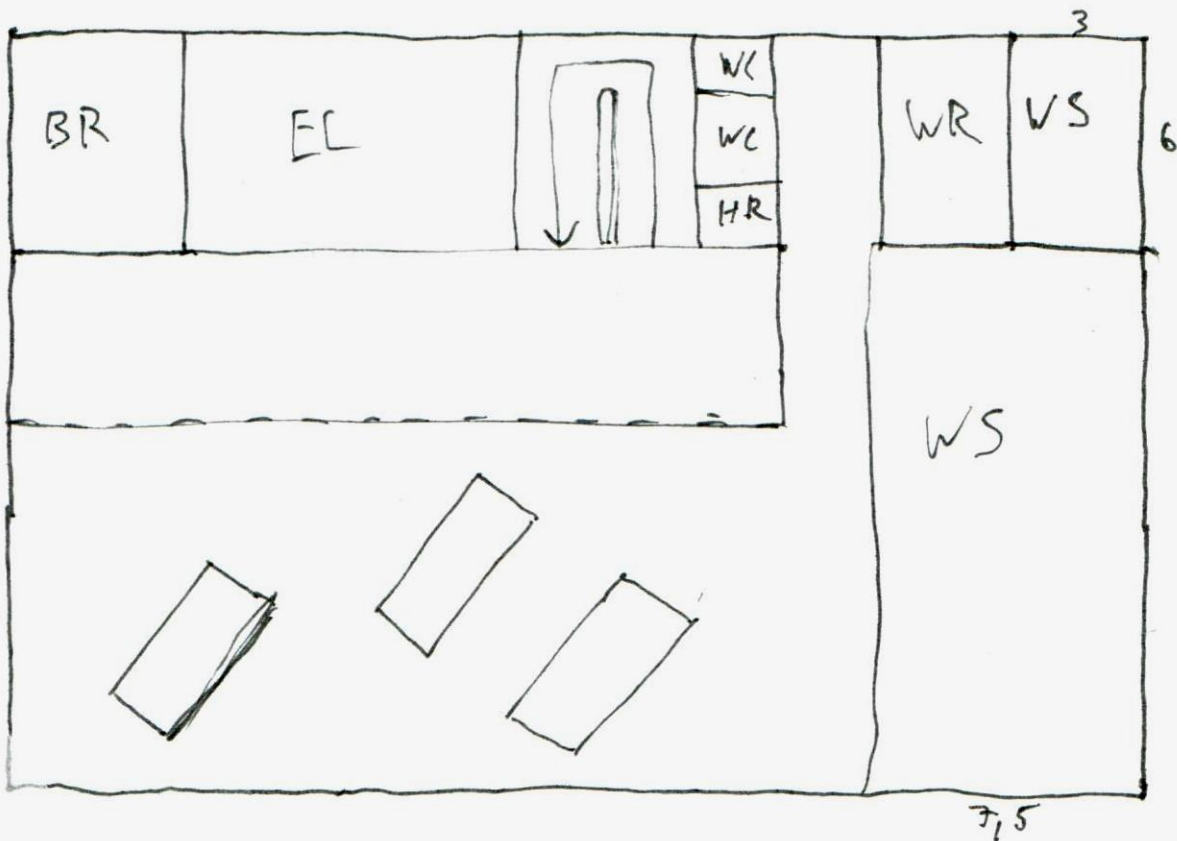


14.10.2015



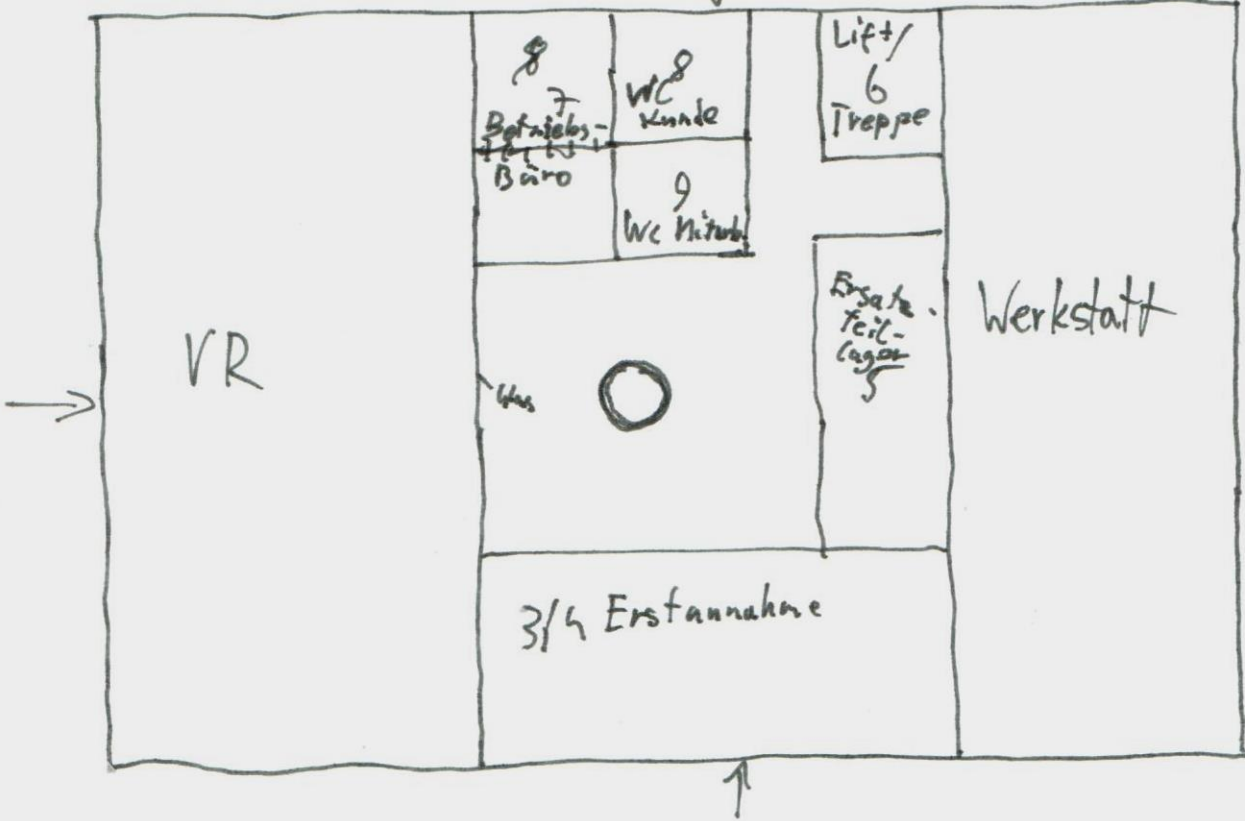
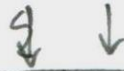
EG

14.10.2015



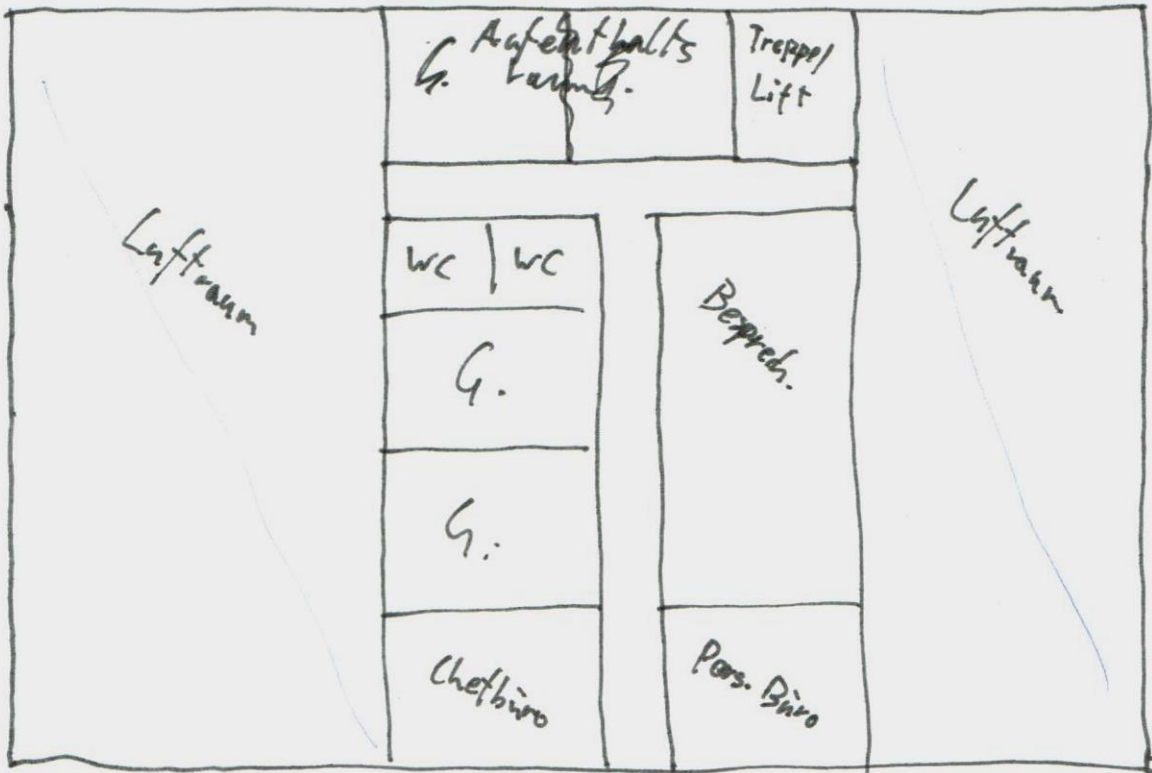
EG

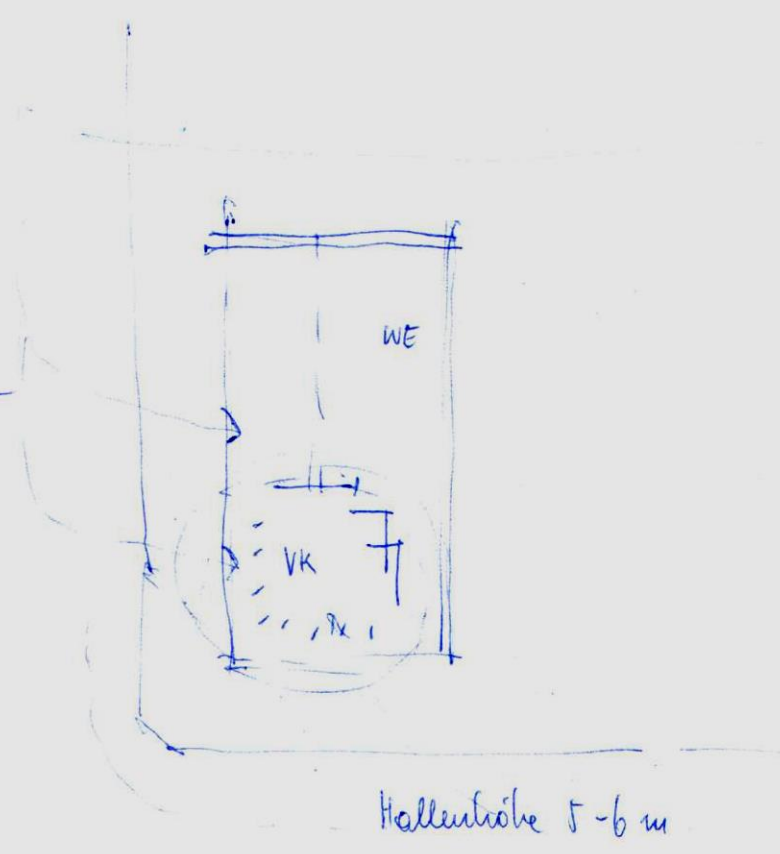
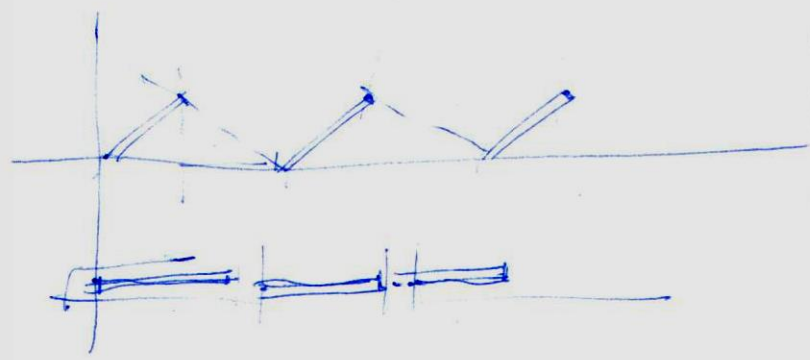
14.10.2015



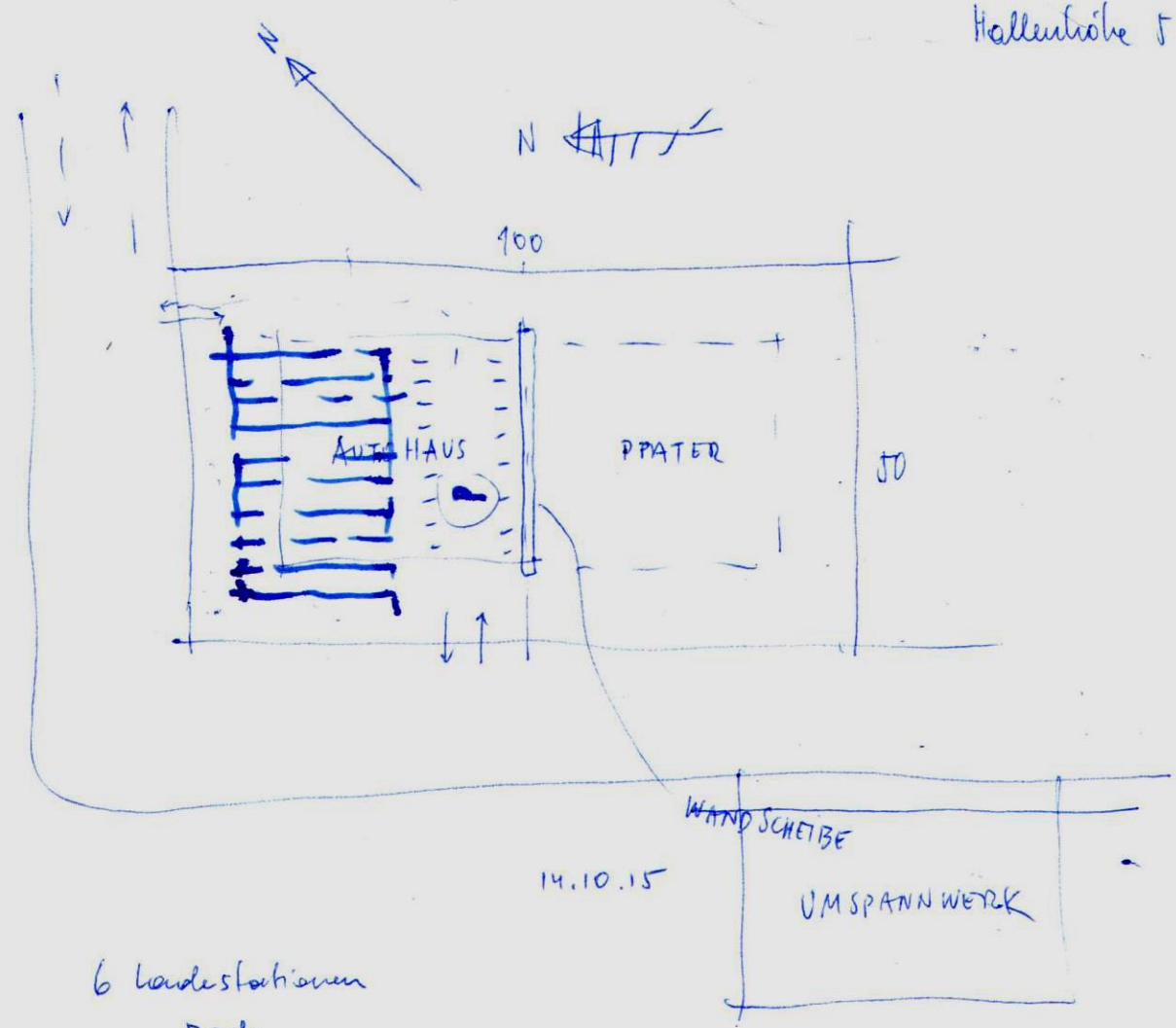
1. Stock

14.10.2015

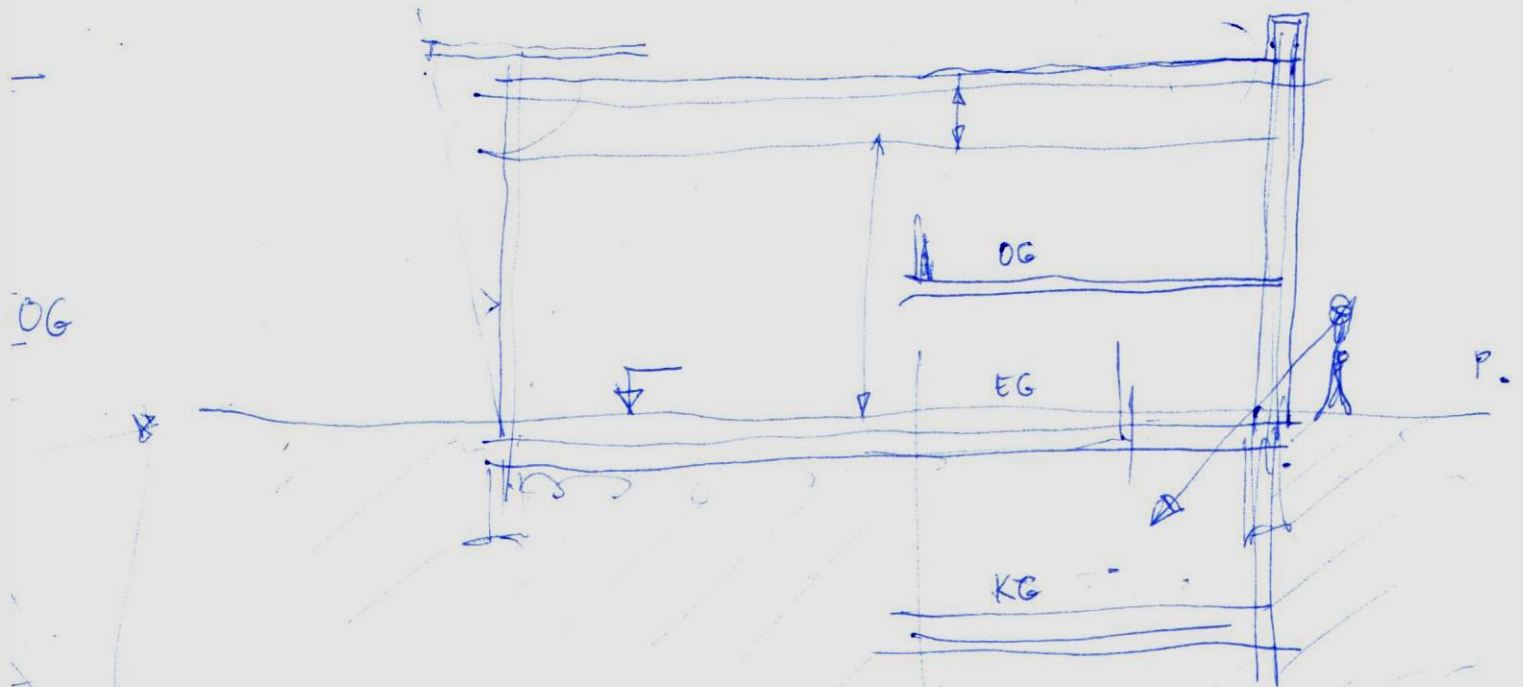
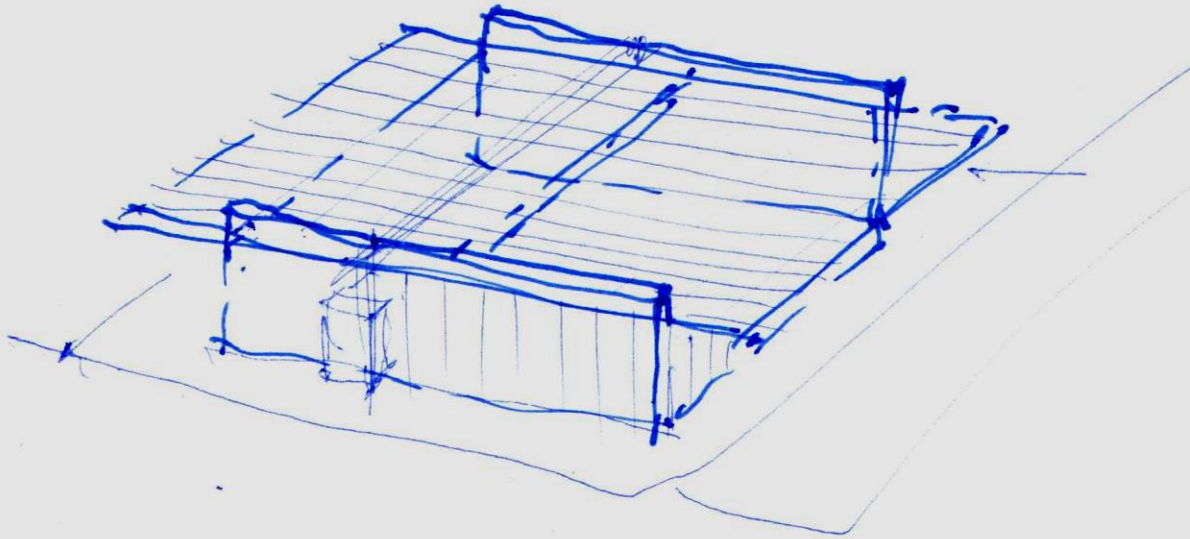
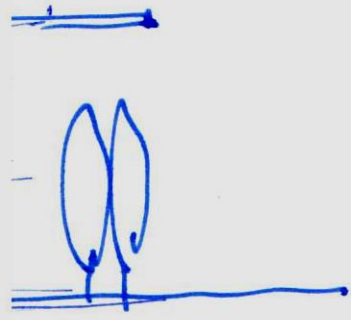




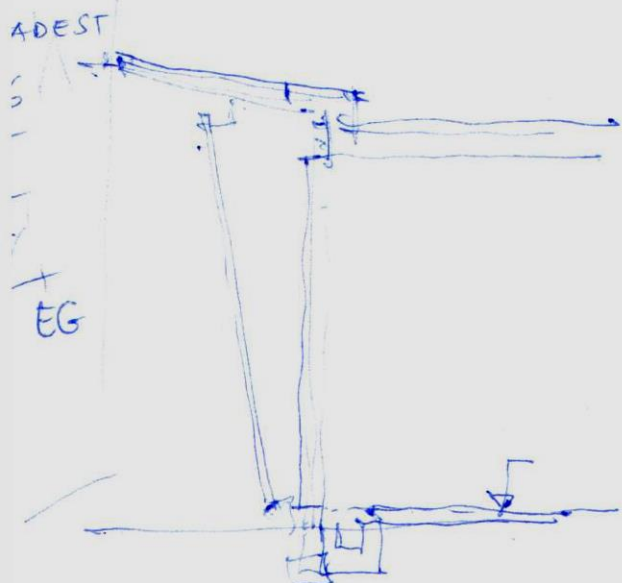
WU



6 Landestationen
Dach



SCHNITT



10-20 S.

60 S.

