

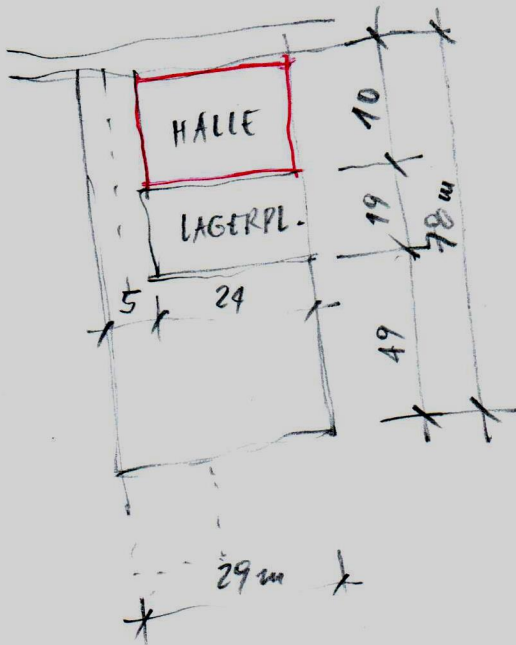
13.1.16

3WYZ

Hr. Raditsch

Wohnhaus

Gf.-Nr. 185



$$\begin{array}{r} 49 \\ 19 \\ 10 \\ \hline 78 \end{array}$$

Wohnhaus

- ebenerdig, ohne Keller
- Baumaterial
- 72m² - 86m²
- Eingang
- Bad/WC
- WOZI, Kochensche
- 2 Zimmer
- Abstr. / Technikraum

5 Häuser

verdichteter Flurplan

$$\begin{array}{r} 29 \times 49 = 1421 \text{ m}^2 \\ - 11 \times 25 = - 275 \text{ m}^2 \\ \hline 1146 \text{ m}^2 \\ - 150 \text{ m}^2 \text{ Wege} \\ \hline 1000 \text{ m}^2 \end{array}$$

BGF 66m²

$$\times 4 = 264$$

$$\times 5 = 330 \text{ m}^2$$

N

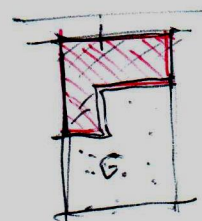


1:500

$$\begin{array}{r} 1000 \\ - 264 \\ \hline 736/4 = \end{array}$$

184 m²
pro Einfamilienhaus

$$1000/5 = 200$$



$$\begin{array}{r} 200 \\ - 66 \text{ Haus} \\ \hline 134 \text{ Garten} \end{array}$$

